



MILWAUKEE VOLLEYBALL GAME NOTES

10 NCAA TOURNAMENTS | 14 CONFERENCE CHAMPIONSHIPS | 12 ALL-AMERICANS

MKEPanthers.com || @MKE_Volleyball || Contact: Sean Engel || Email: engelsf@uwm.edu || Office/Cell: 414-435-8118

2023 SCHEDULE / RESULTS

Date	Opponent	TV	Time
August			
25	at Western Michigan		L, 1-3
26	vs. Northern Iowa		L, 0-3
26	vs. Villanova		L, 2-3
September			
1	vs. California Baptist		L, 1-3
1	vs. Montana State		W, 3-1
2	at St. Thomas (Minn.)		W, 3-0
4	NORTHWESTERN	ESPN+	W, 3-1
8	vs. Idaho		W, 3-0
8	vs. Western Illinois		W, 3-2
9	at SIUE	ESPN+	L, 1-3
12	DEPAUL	ESPN+	W, 3-0
14	MARQUETTE	ESPN+	L, 1-3
15	AIR FORCE	ESPN+	W, 3-2
19	at Chicago State	YouTube	W, 3-2
22	IUPUI *	ESPN+	W, 3-0
23	PURDUE FORT WAYNE *	ESPN+	W, 3-0
29	at Robert Morris *	ESPN+	W, 3-1
30	at Youngstown State *	ESPN+	W, 3-1
October			
3	GREEN BAY *	ESPN+	L, 1-3
6	NORTHERN KENTUCKY *	ESPN+	W, 3-1
7	WRIGHT STATE *	ESPN+	W, 3-1
13	at Oakland *	ESPN+	5:00 pm
14	at Cleveland State *	ESPN+	3:00 pm
20	at Purdue Fort Wayne *	ESPN+	5:00 pm
21	at IUPUI *	ESPN+	3:00 pm
27	YOUNGSTOWN STATE *	ESPN+	6:00 pm
28	ROBERT MORRIS *	ESPN+	4:00 pm
31	at Green Bay *	ESPN+	6:00 pm
November			
3	at Wright State *		5:00 pm
4	at Northern Kentucky *	ESPN+	2:00 pm
10	CLEVELAND STATE *	ESPN+	6:00 pm
11	OAKLAND *	ESPN+	4:00 pm
17	Horizon Quarterfinals		TBA
18	Horizon Semifinals		TBA
19	Horizon Championship		TBA

*Horizon League Game | All times Central
HOME GAMES IN BOLD

ESPN+ is offered at a price of \$9.99/month or \$99.99/year. Fans can sign-up or cancel at anytime.

It is also available as part of a bundle offer that gives subscribers access to Disney+, Hulu, and ESPN+ for \$13.99/month.

MATCH 22

MILWAUKEE at OAKLAND

October 13, 2023 | Athletics Center O'Rena | Rochester, Michigan | 5:00 pm



PANTHERS
14-7, 6-1 Horizon



GOLDEN GRIZZLIES
11-8, 5-2 Horizon



MATCH 23

MILWAUKEE at CLEVELAND STATE

October 14, 2023 | Woodling Gymnasium | Cleveland, Ohio | 3:00 pm



PANTHERS
14-7, 6-1 Horizon



VIKINGS
9-9, 3-4 Horizon



QUICK NOTES

» Milwaukee heads out on the road for its next four games beginning with Oakland and Cleveland State this weekend. The Panthers went 2-1 at home this past week with a loss to Green Bay before bouncing back with a win over Northern Kentucky on Friday followed by a win over preseason favorite Wright State on Saturday.

» The Panthers meet the Golden Grizzlies of Oakland on Friday evening. Milwaukee is on a six-match winning streak against the Golden Grizzlies dating back to the Spring 2021 season, while MKE is 13-9 all-time against Oakland, which includes a 5-5 mark in Rochester, Michigan.

» In terms of common opponents, Milwaukee and Oakland have wins against St. Thomas, Western Illinois, Purdue Fort Wayne, Robert Morris, IUPUI, and Wright State. The Panthers also own wins against Chicago State and Northern Kentucky, who have beaten Oakland this season.

» Cleveland State ended Milwaukee's season in the quarterfinal round of the 2022 Horizon League Tournament as the Vikings are on a two-match winning streak against the Panthers. The Panthers are looking for their 50th all-time win against Cleveland State as MKE is 49-22 in all meetings. Milwaukee owns a 22-13 mark in road games in Northeast Ohio.

» The Panthers and Vikings have faced seven common opponents and have identical wins over Western Illinois, IUPUI, Youngstown State, and Purdue Fort Wayne. Milwaukee also owns wins over Robert Morris, Wright State, and Northern Kentucky, who the Vikings have lost to.

» The Panthers are led by head coach Susie Johnson, who is in her 17th season as head coach and 27th overall with the program. Johnson became the program's all-time head coaching wins leader with her 272nd on September 19; later in the week she earned her 500th career win on the Panther sideline, which includes her time as both a head coach and an assistant coach.

HEAD TO HEAD

CATEGORY	MILWAUKEE	OAKLAND	CLEVELAND STATE
Kills (Team/Opp)	1,062/1,026	892/882	833/849
Errors (Team/Opp)	378/479	360/384	337/416
Attempts (Team/Opp)	2,803/2,921	2,614/2,656	2,522/2,583
Attacking Percent (Team/Opp)	.244/.187	.204/.188	.197/.168
Assists (Team/Opp)	989/971	829/825	742/787
Assists per Set (Team/Opp)	12.1/11.8	11.8/11.8	10.5/11.6
Service Aces (Team/Opp)	109/123	85/119	88/112
Digs (Team/Opp)	1,211/1,191	1,229/1,170	1,146/1,145
Total Blocks (Team/Opp)	197/163.5	133.5/137	182/104



General Information

Table with 2 columns: Category (Location, Founded, Enrollment, Nickname, Colors, Field/Capacity, Affiliation, Conference, Chancellor, Director of Athletics, Associate AD/SWA, Ticket Office Phone) and Value (Milwaukee, Wis., 1885, 24,836, Panthers, Black and Gold, Klotsche Center/2,500, NCAA Division I, Horizon League, Mark Mone, Amanda Braun, Kathy Litzau, 414-229-5886)

Team History

Table with 2 columns: Category (First Year of Volleyball, All-Time Record, First Year in Division I, NCAA Division I Record, NCAA Tournament Appearances, Last NCAA Appearance, Last NCAA Opponent, Result) and Value (1973, 1146-687-9, 1990, 579-434, 10, 2013, Wisconsin, L, 3-0)

2022 Team Information

Table with 2 columns: Category (Overall Record, Home/Away/Neutral, Horizon Record Record, League Finish, League Tournament Finish, Starters Returning/Lost, Letterwinners Returning/Lost) and Value (10-20, 6-4/3-10/1-6, 9-9, 5th/10, Loss in Quarterfinals, 7/0, 13/0)

Coaching Staff

Table with 2 columns: Category (Head Coach, Milwaukee Record, Office Phone, Associate Head Coach, Assistant Coach, Assistant Coach, Athletic Trainer) and Value (Susie Johnson, Idaho State '93, 278-207, 414-229-4483, Lindsey Vanden Berg, Milwaukee '03, Nikki Zimmerman, Iowa '14, Will Hall, UW-Stout '00, Katie Wissing, Saint Louis '21)

Media Relations

Table with 2 columns: Category (Director of Ath. Comm./VB Contact, Office/Cell Phone, E-mail, Assistant AD Communications, Athletic Communications Assistant, Content Creation & Strategy, Multimedia Services, Athletics Website) and Value (Sean Engel, 414-435-8118, engelsf@uwm.edu, Chris Zills, Seth Dittmer, Rachel Klemp, Andrew Levesque, www.mkepanthers.com)

2023 HORIZON LEAGUE STANDINGS

Table with 8 columns: Team, Horizon League (W, L, Pct.), Overall (W, L, Pct.), Strk. Rows include Milwaukee, Green Bay, Oakland, Wright State, Northern Kentucky, Cleveland State, Purdue Fort Wayne, IUPUI, Youngstown State, Robert Morris.

AROUND THE HORIZON LEAGUE

Table with 3 columns: Date (Oct. 6, Oct. 7, Oct. 13, Oct. 14, Oct. 17, Oct. 20, Oct. 21, Oct. 24, Oct. 27), Location/Matchup, Time. Lists various matchups and times for the week.

HORIZON LEAGUE STATISTICAL LEADERS

Hitting Percent

Table with 2 columns: Rank, Player/Team, Hitting Percent. Top 5: 1. Ari Miller (MKE) .382, 2. Ainsley Guse (OAK) .329, 3. Skyy Smith (NKU) .329, 4. Reilly Zegunis (WSU) .318, 5. Morgan Ostrowski (IUPUI) .301

Kills/Set

Table with 2 columns: Rank, Player/Team, Kills/Set. Top 5: 1. Panna Ratkai (PFW) 4.04, 2. Megan Alders (WSU) 3.32, 3. Abby Kanarky (NKU) 3.22, 4. Natalie Stepanovich (RMU) 3.18, 5. Patti Cesarini (OAK) 3.15

Assists/Set

Table with 2 columns: Rank, Player/Team, Assists/Set. Top 5: 1. Katie Meyer (WSU) 9.57, 2. Emma Johnson (GB) 9.21, 3. Karly Klaer (CSU) 8.62, 4. Grace Purichia (IUPUI) 8.43, 5. Taya Haffner (PFW) 8.06

Service Aces/Set

Table with 2 columns: Rank, Player/Team, Service Aces/Set. Top 5: 1. Hannah Vanden Berg (GB) 0.52, 2. Panna Ratkai (PFW) 0.44, 3. Ashleigh Wallin (RMU) 0.43, 4. Grace Purichia (IUPUI) 0.43, 5. Natalie Stepanovich (RMU) 0.40

Blocks/Set

Table with 2 columns: Rank, Player/Team, Blocks/Set. Top 5: 1. Ari Miller (MKE) 1.18, 2. Skyy Smith (NKU) 1.15, 3. Julia Sell (YSU) 1.11, 4. JeriLynn Koehler (CSU) 1.07, 5. Allie Siefke (NKU) 1.04

Digs/Set

Table with 2 columns: Rank, Player/Team, Digs/Set. Top 5: 1. Emily Wichmann (OAK) 5.32, 2. Jenny Wessling (WSU) 5.23, 3. Emma Walker (CSU) 5.07, 4. Anna Burke (NKU) 4.99, 5. Isidora Sisic (YSU) 4.47

GAME NOTES

SCOUTING THE COMPETITION – OAKLAND

Oakland has been able to start its conference season with five wins in seven chances and are 11-8 overall on the season. The Golden Grizzlies are only second to Milwaukee in the Horizon League with a .208 hitting percentage to the Panthers' .244 hitting percentage this season. Oakland is currently tops in the league with an average of 17.54 digs per set, good enough for a top-five spot in all of NCAA Division I.

Offensively, Ainsley Guse is second to Milwaukee's Ari Miller in hitting percentage at .332 to Miller's .382. Patti Cesarini is also top-five in the conference in kills with an average of 3.17 kills per set. Emily Wichmann is tops in the conference in digs as she averages 5.33 per set with a league-leading 373 this season.

SCOUTING THE COMPETITION – CLEVELAND STATE

Cleveland State has a 9-9 mark thus far on the season with a 3-4 record in Horizon League games. The Vikings will host Green Bay before welcoming the Panthers to Woodling Gymnasium on Saturday. The Vikings are at the top of the league in hitting defense with a Horizon League-best .172 opponent hitting percent, just ahead of Milwaukee's .187. The Vikings are also just ahead of the Panthers in blocking at 2.57 blocks per set to Milwaukee's 2.40.

Madison Olinger leads the Cleveland State offense in hitting percentage at .300 with 110 kills on 250 attempts. Liberty Torres has a team-best 221 kills with Laken Voss just off the pace at 189 this year. Karly Klaer leads the Horizon with 628 assists, while Emma Walker is towards the top of the league in digs and is one of just three averaging better than five per set.

LAST TIME OUT

Milwaukee looked impressive in its most recent weekend of competition, taking a pair of four-set wins from Northern Kentucky on Friday and Wright State on Saturday at the Klotsche Center.

The Panthers had four players in double-figure kills with Madi Malone leading the way with 17 against the Norse on Friday, while Kaley Blake had a double-double as she led the team with 23 assists and 16 digs. Ari Miller had seven blocks on the match as she hit a team-best .458 offensively.

Against Wright State it was Malone to lead the way for the Panthers again with 21 kills and a .388 hitting percentage. Josie Johnson had 21 assists, while Blake had 20, with both Malone and Miller each recording a pair of aces each. The Panthers had 11 blocks on the match including seven assisted blocks by Lakyn Graves. Kara Erdmann had a season-best 18 digs in the effort to help the Panthers to the win.

IN THE NATION

Out of 332 Division I programs, Milwaukee is currently seconds in the nation in team assists with 989, team kills with 1,062, and team blocks with 197.

The Panthers are also fourth in the nation in total attacks with 2,803 on the season, and seventh in total team digs with 1,211 on the year.

MILLER'S TOP-10 ASCENT

With 252 kills this season, Ari Miller now has 1,432 for her career with Milwaukee, that total now places her third on the all-time Division I kills list in program history. Next on the list is Laura Dallenbach in second place all-time as Dallenbach finished her career with 1,534 career kills.

In addition to her kills mark, Miller now has 97 blocks in her final collegiate season to give her 413 career blocks. She is currently in fourth on the all-time blocks list and needs six more to reach the top-three on the all-time blocks list.

Miller also moved into the top-10 all time in both matches played and sets played, Miller has now seen time in 123 career matches (3rd) and 454 sets played (5th).

HORIZON LEAGUE HONORS

Milwaukee has had a league-leading five selections for Horizon League Player of the Week as Madi Malone earned her second-consecutive selection on Monday afternoon. In addition to Malone's two selections, Ari Miller has earned the weekly nod from the conference on three occasions in the month of September.

Malone and Miller are two of just three Horizon League student-athletes to earn multiple Player of the Week nods this season. Panna Ratkai of Purdue Fort Wayne has three selections to tie Miller for the league lead.

PICKING UP THE PACE IN HORIZON LEAGUE PLAY

In seven conference matches this season, Madi Malone has stepped it up with a team-best 90 kills, good enough for 3.46 kills per set and is hitting .289 on the year with a team-best 232 attacking attempts. Malone is tied for fifth on the team with seven service aces and is third on the team with 63 digs.

In 18 matches overall on the season, Malone has 3.02 kills per set with 248 kills on a

team-high 708 attempts. Malone only had two service aces in non-conference play, while she finished non-league play with 131 digs.

BLOCK PARTY

Following 179 blocks in 2019, the Panthers have increased their team's total block total every season, with 180 in 2021, and 211 in 2022. Through 21 matches Milwaukee has 197 blocks and are on a strong pace to continue their upward trend in 2023.

The Panthers are tops in the Horizon League with their team block total at 197 and are also second in the league in solo blocks with 44 thus far. Ari Miller is third in the league with 13 solo blocks, while Lakyn Graves is tied for fourth with 12, Czen Beneby is tied for sixth in the league with 11.

With 97 blocks on the season individually, Ari Miller is currently sixth in all of NCAA Division I and is just 11 blocks off the national lead. Miller is two shy of tying her career-high of 99 blocks set during her freshman season.

DOUBLE-QUARTER

Twice this season setters Kaley Blake and Josie Johnson have recorded at least 25 assists each in the span of one contest. Against Villanova early in the season, Johnson and Blake had 26 in the five-setter against the Wildcats. Against Air Force on September 15, Johnson had 29 and Blake registered 25. The duo has now accomplished the feat on three occasions in their career, with their first instance coming on October 18 of the 2022 season, when Johnson had 26 and Blake had 29 against IUPUI.

The last time two setters had more than 30 assists in a single match came back on August 29, 2021, when Blake had 32 assists and former teammate Rylie Vaughn had 31 in the team's five-set match against Valparaiso at the Klotsche Center.

CAN YOU DIG IT?

In her final season with the team, Sarah Schrader has played a vital role in the team's defensive efforts in the back row this year with a team-best 304 digs, which is already the second highest dig total for her career. In 2022, Schrader had a career-best 324 digs and is well ahead of that pace as she is averaging 4.14 digs per set compared to last year's 3.31 dig per set as a junior.

With her 36 digs against Western Illinois on September 8, Schrader moved into a third-place tie on the single-match digs list in five-set matches, equaling the mark of Myanna Ruiz in September of 2015. The single match-record for the Panthers is 41 digs set by Becky Peters in 2005, while Lauren Felsing is the only other player to reach 40 digs in a match as she did so in 2009 with 40 digs in a four-set match.

NO SOPHOMORE SLUMP HERE

Following strong freshman campaigns in 2022 Natalie Schmitz and Josie Johnson both reached new career-high marks at their respective positions during the opening trio of matches in Michigan.

Schmitz has secured a career-best 17 kills in three matches this season, including the team's matches against Villanova, Montana State, and Northwestern. Johnson also reached a career-high mark in the match against the Bobcats of Montana State with 31 assists.

COACHING MILESTONES

Milwaukee head coach Susie Johnson earned her 272nd head coaching victory at Milwaukee to become the program's all-time leader in wins as a Division I program (since 1990). Johnson earned the win with a five-set victory over the Chicago State Cougars on Tuesday evening and is now the department's leader in wins for any women's sport at Milwaukee.

In addition to her head coaching wins total with the Panthers, Johnson also recorded her 500th career win with the Panthers program on Saturday against Purdue Fort Wayne. Johnson has 274 wins as head coach, coupled with 226 wins during her 10 seasons as an assistant coach with the program.

1,000 DIVISION I MATCHES

Earlier this season, the Milwaukee volleyball program played its 1,000th Division I match in its 34th season of competition. The Panthers won the match in five sets over Western Illinois at the SIUE Cougar Classic. The program's first-ever match took place on August 31, 1990, against Wright State in Macomb, Illinois at a tournament hosted by Western Illinois.

LOOKING AHEAD

After this weekend, the Panthers continue their road trip as Milwaukee will head to Purdue Fort Wayne and IUPUI. After the weekend in Indiana, the Panthers return home to take on Youngstown State and Robert Morris at the Klotsche Center during the final weekend in October.

MILWAUKEE VOLLEYBALL ROSTER

No.	Name	Pos.	Ht.	Yr.	Hometown (High School/College)
1	Tatum Catalano	OH/RS	6-0	Jr.	Germantown, Wis. (Germantown)
2	Bri Geurts	RS/MB	6-0	Jr.	De Pere, Wis. (De Pere)
3	Lakyn Graves	MB	6-2	Jr.	Menomonee Falls, Wis. (Sussex Hamilton/Omaha)
4	Josie Johnson	S	5-7	So.	Burlington, Wis. (Waterford Union)
6	Ari Miller	MB	5-11	Gr.	Jackson, Wis. (Kettle Moraine Lutheran)
8	Kaley Blake	S	5-7	Sr.	Burlington, Wis. (Burlington)
9	Kati Goba	DS	5-4	Fr.	Mukwonago, Wis. (Wisconsin Lutheran)
10	Czhen Beneby	MB	6-3	So.	West Palm Beach, Fla. (Alexander W. Dreyfoos/Virginia)
11	Natalie Schmitz	OH	6-1	So.	Ham Lake, Minn. (Blaine)
12	Bella Lipski	MB	6-2	Fr.	Milwaukee, Wis. (Divine Savior Holy Angels)
13	Kara Erdmann	DS	5-6	So.	Forresteron, Ill. (Forresteron)
14	Madi Malone	OH	6-0	Jr.	Newark, Ill. (Newark)
15	Sarah Schrader	OH	5-8	Sr.	Sussex, Wis. (Sussex Hamilton)
16	Rachel Scott	RS	6-2	So.	Belvidere, Ill. (Belvidere North)
17	Mati Jakscht	DS	5-6	Gr.	East Troy, Wis. (East Troy)



Tatum Catalano



Bri Geurts



Lakyn Graves



Josie Johnson



Ari Miller



Kaley Blake



Kati Goba



Czhen Beneby



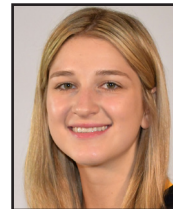
Natalie Schmitz



Bella Lipski



Kara Erdmann



Madi Malone



Sarah Schrader



Rachel Scott



Mati Jakscht

COACHING STAFF

Head Coach: Susie Johnson (17th season)
Associate Head Coach: Lindsey Vanden Berg (17th season)
Assistant Coach: Nikki Zimmerman (third season)
Assistant Coach: Will Hall (first season)

ROSTER BY STATE

Wisconsin: Kaley Blake, Tatum Catalano, Bri Geurts, Kati Goba, Lakyn Graves, Mati Jakscht, Josie Johnson, Bella Lipski, Ari Miller, Sarah Schrader
Florida: Czhen Beneby
Illinois: Kara Erdmann, Madi Malone, Rachel Scott
Minnesota: Natalie Schmitz

PRONUNCIATION GUIDE

Czhen Beneby ZEN BEN-uh-bee
Tatum Catalano TAY-tum cat-uh-LAH-no
Bri Geurts GERTS
Lakyn Graves LAY-kin
Mati Jakscht YOTCH

ROSTER BY CLASS

Graduate Students: Ari Miller, Mati Jakscht
Seniors: Kaley Blake, Sarah Schrader
Juniors: Tatum Catalano, Bri Geurts, Lakyn Graves, Madi Malone
Sophomore: Czhen Beneby, Kara Erdmann, Josie Johnson, Natalie Schmitz, Rachel Scott
Freshman: Kati Goba, Bella Lipski



SUSIE JOHNSON

HEAD COACH
17TH SEASON

278-207 (.573) AT MILWAUKEE

Susie Johnson enters her 27th overall season with the Milwaukee volleyball program, including the last 16 seasons as head coach as she enters the 2023 season.

Johnson was named head coach in May of 2007 after 10 years as an assistant and associate head coach at Milwaukee. Since taking over the reins, Johnson has led Milwaukee to 264 wins, six regular-season titles, four league-tournament crowns, and four NCAA Tournament berths.

In her 26 total seasons at Milwaukee, the Panthers have compiled a 490-270 record. That number includes a 286-98 mark in league play and a 240-70 record at the Klotsche Center. The Panthers have also won 159 of their 190 league matches at home with Johnson on the bench.

With half of the roster new to the Milwaukee program in 2022, the Panthers mustered 10 wins while battling through a challenging non-conference slate that included five teams that were ranked by the AVCA, including No. 11 Purdue, who was the highest ranked opponent for a Panther squad since December of 2013. Three Panthers earned postseason honors from the Horizon League as Ari Miller was a first-team honoree, Madi Malone was a second teamer, and Natalie Schmitz was a member of the All-Freshman Team. Miller went on to become a member of the Horizon All-Academic Team as well as the College Sports Communicators Academic All-District team, becoming the first Panther to receive multiple selections by CSC/CoSIDA.

Her overall run has included the first undefeated Horizon League season in 17 years, a school-record 18-match winning streak and the program's best-ever NCAA Tournament performance - a heartbreaking five-set loss to Dayton in 2009.

In 2011, the Panthers went 25-5 overall and 16-0 in league play,

becoming the first Horizon League team to go through the league schedule without a loss since Notre Dame did it in 1994. Milwaukee also set a school record with 18 straight wins and nearly upset Iowa State in the first round of the postseason.

Johnson's efforts on the recruiting trail have led to nine league newcomers of the year during her tenure, including Malone in 2022, Bridget Wallenberger in 2016, and Rachel Neuberger in 2009. Plus, 24 Panther players have earned a spot on the league's all-newcomer team in the last 24 years. Panther players have then consistently developed into the best players in the Horizon League. In her 25 seasons in Milwaukee, Johnson has coached 11 League Players of the Year, with Kerri Schuh winning the award twice and Neuberger claiming the distinction in 2013.

In all, players have earned all-league honors 66 times under Johnson and the recognition for Panther players has extended far beyond the Horizon League. With Johnson's assistance, MKE players have earned AVCA All-America honors ten times and AVCA All-Region honors 22 times. Plus, three Panthers have earned AVCA Region Freshman of the Year accolades, including Neuberger and Kayla Price.

Johnson's playing background is at setter, where she earned All-Big Sky and All-Northwest Region honors at Idaho State. She was also a two-time Academic All-Big Sky honoree and has helped direct the Panthers to great success in the classroom, with two Academic All-Americans and a team GPA above 3.3.

A native of Racine, Johnson joined the Panther staff after serving as an assistant coach at Indiana State. She also worked at Idaho State and was head coach at UW-Parkside. She lives in Racine with her husband, C.J., son Ty, daughter Josie and stepson Brody.

Panthers 2023 Record When ...

At Home	7-2
On the Road	4-2
At a Neutral Site	3-3
In Three-Set Matches	5-1
In Four-Set Matches	6-5
In Five-Set Matches	3-1
Winning the First Set	11-2
Leading After Two Sets	6-0
Trailing After Two Sets	1-2
Tied After Two Sets	7-5
On Weekdays	8-4
On Weekends	2-3
On Mondays	1-0
On Tuesdays	2-1
On Wednesdays	0-0
On Thursdays	0-1
On Fridays	7-2
On Saturdays	4-3
On Sundays	0-0
In August	0-3
In September	12-3
In October	2-1
In November	0-0
vs. Horizon	6-1

2023 HORIZON LEAGUE PRESEASON POLL

School (1st place votes)	Points
1. Wright State (9)	99
2. Northern Kentucky (1)	85
3. Green Bay	76
4. Milwaukee	73
5. Cleveland State	66
6. Oakland	47
7. Purdue Fort Wayne	35
8. Youngstown State	33
T9. IUPUI	18
T9. Robert Morris	18

IT'S "MILWAUKEE"

A lot has been made of the correct way to talk about the University of Wisconsin-Milwaukee, especially in the area of athletics. It would be appreciated if you would refer to the athletics teams as either "Milwaukee" or "MKE". Your cooperation in this matter is greatly appreciated.

Milwaukee Athletics is making an effort to brand itself as "Milwaukee" instead of other references. Please avoid UW-Milwaukee, UW-M, Wisc.-Mil, UW-MIL, Wisconsin-Milwaukee, etc. We appreciate your assistance with this effort in advance.



2023 OVERALL STATISTICS

#	Player	SP	Attack					Set		Serve			Dig			Blocking				PTS		
			K	K/S	E	TA	PCT	A	A/S	SA	SE	SA/S	RE	DIG	DIG/S	BS	BA	TOT/S	BLK/S		BE	BHE
2	Geurts, Bri	61	99	1.62	38	251	.243	4	0.07	0	0	0.00	0	12	0.20	2	20	22	0.36	1	0	111.0
3	Graves, Lakyn	82	73	0.89	30	187	.230	3	0.04	3	9	0.04	0	22	0.27	12	67	79	0.96	4	2	121.5
4	Johnson, Josie	82	13	0.16	2	43	.256	437	5.33	17	23	0.21	0	148	1.80	0	0	0	0.00	0	6	30.0
6	Miller, Ari	82	252	3.07	52	523	.382	9	0.11	20	31	0.24	0	71	0.87	13	84	97	1.18	11	1	327.0
8	Blake, Kaley	82	5	0.06	0	26	.192	415	5.06	18	13	0.22	0	175	2.13	0	0	0	0.00	0	5	23.0
9	Goba, Kati	22	0	0.00	0	0	.000	7	0.32	1	6	0.05	5	32	1.45	0	1	1	0.05	0	0	1.5
10	Beneby, Czhen	74	119	1.61	66	273	.194	1	0.01	0	0	0.00	0	22	0.30	11	40	51	0.69	8	3	150.0
11	Schmitz, Natalie	82	215	2.62	95	670	.179	4	0.05	17	15	0.21	15	68	0.83	3	35	38	0.46	6	0	252.5
13	Erdmann, Kara	64	0	0.00	1	2	-.500	22	0.34	1	1	0.02	7	118	1.84	0	0	0	0.00	0	2	1.0
14	Malone, Madi	78	238	3.05	77	674	.239	18	0.23	8	13	0.10	43	185	2.37	2	29	31	0.40	1	1	262.5
15	Schrader, Sarah	76	1	0.01	0	11	.091	61	0.80	21	14	0.28	34	304	4.00	0	0	0	0.00	1	1	22.0
16	Scott, Rachel	48	36	0.75	10	106	.245	5	0.10	0	0	0.00	0	22	0.46	1	30	31	0.65	7	0	52.0
17	Jakscht, Mati	12	1	0.08	0	3	.333	3	0.25	2	1	0.17	5	23	1.92	0	0	0	0.00	0	2	3.0
MILWAUKEE		82	1062	12.95	378	2803	.244	989	12.06	109	126	1.33	123	1211	14.77	44	306	197	2.40	39	23	1,368.0
Opponents		82	1026	12.51	479	2921	.187	971	11.84	123	133	1.50	109	1191	14.52	19	289	163.5	1.99	26	13	1,312.5

2023 HORIZON LEAGUE STATISTICS

#	Player	SP	MP-MS	Attack					Set				Serve				
				K	K/S	E	TA	PCT	A	A/S	TA	PCT	SA	SA/S	SE	TA	PCT
2	Geurts, Bri	13	4-0	6	0.46	8	38	-.053	0	0.00	3	.000	0	0.00	0	0	.000
3	Graves, Lakyn	26	7-7	42	1.62	16	88	.295	3	0.12	11	.273	0	0.00	2	2	.000
4	Johnson, Josie	26	7-7	4	0.15	2	18	.111	116	4.46	336	.345	8	0.31	9	90	.900
6	Miller, Ari	26	7-7	73	2.81	16	151	.377	3	0.12	10	.300	8	0.31	8	80	.900
8	Blake, Kaley	26	7-0	4	0.15	0	10	.400	150	5.77	326	.460	9	0.35	5	109	.954
9	Goba, Kati	4	2-1	0	0.00	0	0	.000	3	0.75	10	.300	1	0.25	1	15	.933
10	Beneby, Czhen	26	7-7	46	1.77	23	99	.232	0	0.00	8	.000	0	0.00	0	0	.000
11	Schmitz, Natalie	26	7-5	63	2.42	27	197	.183	0	0.00	12	.000	7	0.27	7	74	.905
13	Erdmann, Kara	22	7-1	0	0.00	0	1	.000	6	0.27	33	.182	0	0.00	0	17	1.000
14	Malone, Madi	22	6-6	80	3.64	16	198	.323	5	0.23	23	.217	6	0.27	1	90	.989
15	Schrader, Sarah	26	7-0	0	0.00	0	3	.000	38	1.46	98	.388	8	0.31	6	109	.945
16	Scott, Rachel	18	6-0	21	1.17	5	50	.320	1	0.06	5	.200	0	0.00	0	0	.000
17	Jakscht, Mati	2	1-0	0	0.00	0	1	.000	0	0.00	3	.000	0	0.00	0	0	.000
MILWAUKEE		26	7-7	349	13.42	120	888	.258	325	12.50	879	.370	48	1.85	39	605	.936
Opponents		26	7-7	302	11.62	166	949	.143	282	10.85	938	.301	36	1.38	39	518	.925

2023 SEASON BESTS

<p>KILLS Team: 71 vs. Western Illinois (Sept. 8) Individual: 23 (Madi Malone) vs. Air Force (Sept. 15) Opponent: 70 vs. Villanova (Aug. 26)</p> <p>ATTACK PERCENTAGE (min. 10 kills) Team: .459 vs. Idaho (Sept. 8) Individual: .650 (Ari Miller) vs. Purdue Fort Wayne (Sept. 23) Opponent: .291 vs. Villanova (Aug. 26)</p> <p>ASSISTS Team: 66 vs. Western Illinois (Sept. 8) Individual: 32 (Josie Johnson) vs. Western Illinois (Sept. 8) Opponent: 67 vs. Villanova (Aug. 26)</p>	<p>ACES Team: 9 (Twice) Individual: 3 (Six Players) Opponent: 13 vs. Montana State (Sept. 1)</p> <p>DIGS Team: 93 vs. Western Illinois (Sept. 8) Individual: 36 (Sarah Schrader) vs. Western Illinois (Sept. 8) Opponent: 83 vs. Western Illinois (Sept. 8)</p> <p>TOTAL BLOCKS Team: 14 (Three Times) Individual: 8 (Ari Miller; Three Times) Opponent: 12.5 vs. Northwestern (Sept. 4)</p>
--	---

2023 SCHEDULE AND RESULTS

Date	Opponent	Score	Set-by-set	Overall	Horizon Time	Att.	
<i>WESTERN MICHIGAN TOURNAMENT</i>							
Aug. 25	at Western Michigan	L, 1-3	15-25, 25-21, 20-25, 12-25	0-1	1:46	251	
Aug. 26	vs. Northern Iowa	L, 0-3	22-25, 23-25, 20-25	0-2	1:24	117	
Aug. 26	vs. Villanova	L, 2-3	22-25, 25-22, 23-25, 25-18, 15-17	0-3	2:23	153	
<i>ST. THOMAS TOURNAMENT</i>							
Sept. 1	vs. California Baptist	L, 1-3	25-23, 13-25, 22-25, 19-25	0-4	2:01	153	
Sept. 1	vs. Montana State	W, 3-1	26-24, 22-25, 25-16, 25-22	1-4	1:58	214	
Sept. 2	at St. Thomas (Minn.)	W, 3-0	25-19, 25-14, 25-18	2-4	1:18	406	
Sept. 9	NORTHWESTERN	W, 3-1	25-23, 14-25, 25-22, 25-23	3-4	2:04	637	
<i>SIUE TOURNAMENT</i>							
Sept. 8	vs. Idaho	W, 3-0	25-13, 25-16, 25-14	4-4	1:14	102	
Sept. 8	vs. Western Illinois	W, 3-2	22-25, 25-18, 25-18, 25-27, 15-10	5-4	2:27	104	
Sept. 9	at SIU-Edwardsville	L, 1-3	23-25, 25-16, 19-25, 18-25	5-5	1:50	n/a	
Sept. 12	DEPAUL	W, 3-0	25-15, 25-20, 25-22	6-5	1:18	313	
Sept. 14	MARQUETTE	L, 1-3	14-25, 18-25, 25-17, 17-25	6-6	1:51	653	
Sept. 15	AIR FORCE	W, 3-2	22-25, 20-25, 25-18, 25-20, 15-13	7-6	2:18	368	
Sept. 19	at Chicago State	W, 3-2	25-23, 16-25, 25-19, 16-25, 15-11	8-6	2:09	n/a	
Sept. 22	IUPUI *	W, 3-0	25-18, 25-17, 25-11	9-6	1-0	1:12	285
Sept. 23	PURDUE FORT WAYNE *	W, 3-0	25-18, 25-9, 25-19	10-6	2-0	1:10	283
Sept. 29	at Robert Morris *	W, 3-1	25-15, 25-27, 25-13, 25-17	11-6	3-0	1:53	142
Sept. 30	at Youngstown State *	W, 3-1	25-20, 25-17, 21-25, 25-20	12-6	4-0	1:57	184
Oct. 3	GREEN BAY *	L, 1-3	25-21, 16-25, 19-25, 17-26	12-7	4-1	1:47	485
Oct. 6	NORTHERN KENTUCKY *	W, 3-1	23-25, 25-16, 25-20, 26-24	13-7	5-1	2:01	431
Oct. 7	WRIGHT STATE *	W, 3-1	25-21, 15-25, 25-16, 25-22	14-7	6-1	1:52	381
Oct. 13	at Oakland *				5:00 pm		
Oct. 14	at Cleveland State *				3:00 pm		
Oct. 20	at Purdue Fort Wayne *				5:00 pm		
Oct. 21	at IUPUI *				3:00 pm		
Oct. 27	YOUNGSTOWN STATE *				6:00 pm		
Oct. 28	ROBERT MORRIS *				4:00 pm		
Oct. 31	at Green Bay *				6:00 pm		
Nov. 3	at Wright State *				5:00 pm		
Nov. 4	at Northern Kentucky *				2:00 pm		
Nov. 10	CLEVELAND STATE *				6:00 pm		
Nov. 11	OAKLAND *				4:00 pm		
Nov. 17	Horizon League Quarterfinals ^				TBA		
Nov. 18	Horizon League Semifinals ^				TBA		
Nov. 19	Horizon League Championship ^				TBA		

 Home Games in **BOLD** | * Horizon League Match | ^ Horizon League Tournament

SEASON & CAREER HIGHS

1 Tatum Catalano | Jr. | OH/RS

2023 Season Highs

Kills n/a
 Attempts n/a
 Hitting % n/a
 Blocks n/a
 Digs n/a
 Aces n/a
 Assists n/a

Career Highs

Kills 4 (Twice)
 Attempts 12 (9/9/22 vs. LSU)
 Hitting % .. 1.000 [1-0-1] (10/7/22 vs. CSU)
 Blocks 4 (Twice)
 Digs 4 (10/8/22 vs. OAK)
 Aces same
 Assists 1 (Twice)

4 Josie Johnson | So. | S

2023 Season Highs

Kills 2 (9/15 vs. Air Force)
 Attempts 5 (9/30 at Youngstown State)
 Hitting % 1.000 [1-0-1] (Five Times)
 Blocks n/a
 Digs 16 (9/15 vs. Air Force)
 Aces 3 (10/6 vs. Northern Ky.)
 Assists 32 (9/8 vs. Western Illinois)

Career Highs

Kills 2 (Three Times)
 Attempts 6 (9/23/22 vs. YSU)
 Hitting % 1.000 [1-0-1] (Five Times)
 Blocks 1 (Twice)
 Digs same
 Aces same
 Assists same

9 Kati Goba | Fr. | DS

2023 Season Highs

Kills n/a
 Attempts n/a
 Hitting % n/a
 Blocks 1 (9/1 vs. Mont. St.)
 Digs 12 (9/2 vs. St. Thomas)
 Aces 1 (9/30 at Youngstown State)
 Assists 2 (9/29 at Robert Morris)

Career Highs

Kills n/a
 Attempts n/a
 Hitting % n/a
 Blocks same
 Digs same
 Aces same
 Assists same

2 Bri Geurts | Jr. | RS/MB

2023 Season Highs

Kills 15 (9/8 vs. Western Illinois)
 Attempts 27 (9/14 vs. Marquette)
 Hitting % . .750 [3-0-4] (8/25 vs. Villanova)
 Blocks 4 (10/7 vs. Wright St.)
 Digs 3 (9/15 vs. Air Force)
 Aces n/a
 Assists 2 (9/4 vs. Northwestern)

Career Highs

Kills same
 Attempts 30 (9/17/22 vs. New Mexico St.)
 Hitting %750 [3-0-4] (Twice)
 Blocks 9 (10/8/22 vs. Oakland)
 Digs 6 (9/2/22 vs. Utah)
 Aces 2 (Five Times)
 Assists 3 (Twice)

6 Ari Miller | Gr. | MB

2023 Season Highs

Kills 19 (Twice)
 Attempts 41 (9/8 vs. Western Illinois)
 Hitting %650 [13-0-20] (9/23 vs. PFW)
 Blocks 8 (Three Times)
 Digs 8 (10/6 vs. Northern Ky.)
 Aces 3 (9/30 at Youngstown State)
 Assists 1 (Nine Times)

Career Highs

Kills 30 (9/17/21 vs. West. Michigan)
 Attempts 50 (9/17/21 vs. West. Michigan)
 Hitting % . .688 [11-0-16] (9/24/22 vs. RM)
 Blocks 10 (10/13/19 at Oakland)
 Digs same
 Aces 3 (Four Times)
 Assists 2 (Five Times)

10 Czhen Beneby | So. | MB

2023 Season Highs

Kills 10 (10/6 vs. Northern Ky.)
 Attempts 20 (Twice)
 Hitting %636 [7-0-11] (9/14 vs. Marq.)
 Blocks 6 (9/19 at Chicago State)
 Digs 4 (Twice)
 Aces n/a
 Assists 1 (9/8 vs. Idaho)

Career Highs

Kills 15 (11/1/22 vs. PFW)
 Attempts 26 (11/5/22 at CSU)
 Hitting % .. .800 [8-0-10] (9/23/22 vs. YSU)
 Blocks 6 (Four Times)
 Digs 5 (10/22 at YSU)
 Aces same
 Assists 1 (Four Times)

3 Lakyn Graves | Jr. | MB

2023 Season Highs

Kills 11 (9/30 at Youngstown State)
 Attempts 19 (Twice)
 Hitting %625 [5-0-8] (9/12 vs. DePaul)
 Blocks 7 (Twice)
 Digs 6 (8/25 at West. Michigan)
 Aces 2 (8/26 vs. Villanova)
 Assists 1 (Three Times)

Career Highs

Kills same
 Attempts 30 (9/16/21 vs. Weber St.)
 Hitting % same
 Blocks 13 (9/3/21 vs. Arizona State)
 Digs same
 Aces same
 Assists same

8 Kaley Blake | Sr. | S

2023 Season Highs

Kills 1 (Five Times)
 Attempts 2 (Six Times)
 Hitting % 1.000 [1-0-1] (Three Times)
 Blocks n/a
 Digs 16 (Twice)
 Aces 3 (9/14 vs. Marquette)
 Assists 28 (9/29 at Robert Morris)

Career Highs

Kills 2 (Twice)
 Attempts 6 (Twice)
 Hitting % 1.000 [2-0-2, 1-0-1] (4x)
 Blocks 1 (9/24/21 at PFW)
 Digs 17 (10/1/22 at NKU)
 Aces 4 (9/27/22 at IUPUI)
 Assists 33 (8/28/22 at Notre Dame)

11 Natalie Schmitz | So. | OH

2023 Season Highs

Kills 17 (Three Times)
 Attempts 54 (9/8 vs. Western Illinois)
 Hitting %450 [11-2-20] (9/2 at STM)
 Blocks 4 (Twice)
 Digs 8 (10/6 vs Northern Ky.)
 Aces 3 (Twice)
 Assists 2 (9/12 vs. DePaul)

Career Highs

Kills same
 Attempts same
 Hitting % . .471 [9-1-17] (9/20/22 vs. PFW)
 Blocks 4 (Three Times)
 Digs same
 Aces 3 (Three Times)
 Assists same

SEASON & CAREER HIGHS

12 Bella Lipski | Fr. | MB

2023 Season Highs

Kills	n/a
Attempts	n/a
Hitting %	n/a
Blocks	n/a
Digs	n/a
Aces	n/a
Assists	n/a

Career Highs

Kills	n/a
Attempts	n/a
Hitting %	n/a
Blocks	n/a
Digs	n/a
Aces	n/a
Assists	n/a

15 Sarah Schrader | Sr. | DS

2023 Season Highs

Kills	1 (9/8 vs. Western Illinois)
Attempts	3 (8/26 vs. Villanova)
Hitting %	1.000 [1-0-1] (9/8 vs. W. Illinois)
Blocks	n/a
Digs	36 (9/8 vs. Western Illinois)
Aces	3 (10/3 vs. Green Bay)
Assists	7 (9/15 vs. Air Force)

Career Highs

Kills	5 (11/5/22 at CSU)
Attempts	24 (3/22/21 at PFW)
Hitting %	1.000 [1-0-1] (Twice)
Blocks	2 (Twice)
Digs	same
Aces	4 (10/22/21 vs. IUPUI)
Assists	9 (8/28/22 at Notre Dame)

13 Kara Erdmann | So. | DS

2023 Season Highs

Kills	n/a
Attempts	1 (Twice)
Hitting %	.000 [0-0-1] (10/7 vs. Wright St.)
Blocks	n/a
Digs	18 (10/7 vs. Wright St.)
Aces	1 (9/4 vs. Northwestern)
Assists	3 (Four Times)

Career Highs

Kills	1 (Twice)
Attempts	2 (Three Times)
Hitting %	1.000 [1-0-1] (Twice)
Blocks	same
Digs	28 (11/18/22 vs. CSU)
Aces	2 (11/1/22 vs. PFW)
Assists	5 (9/30/22 at WSU)

16 Rachel Scott | So. | RS

2023 Season Highs

Kills	9 (9/23 vs. PFW)
Attempts	15 (9/23 vs. PFW)
Hitting %	.750 [3-0-4] (9/22 vs. IUPUI)
Blocks	7 (9/29 at Robert Morris)
Digs	6 (9/29 at Robert Morris)
Aces	n/a
Assists	2 (9/8 vs. Western Illinois)

Career Highs

Kills	same
Attempts	same
Hitting %	same
Blocks	same
Digs	same
Aces	same
Assists	same

14 Madi Malone | Jr. | OH

2023 Season Highs

Kills	23 (9/15 vs. Air Force)
Attempts	55 (9/15 vs. Air Force)
Hitting %	.440 [12-1-25] (Twice)
Blocks	4 (9/1 vs. Cal. Baptist)
Digs	19 (9/1 vs. Mont. St.)
Aces	2 (Twice)
Assists	3 (Twice)

Career Highs

Kills	29 (10/1/21 vs. WSU)
Attempts	66 (10/1/21 vs. WSU)
Hitting %	.467 [9-2-15] (9/11/21 at C-Ark)
Blocks	same
Digs	same
Aces	4 (11/11/21 at RMU)
Assists	3 (Three Times)

17 Mati Jakscht | Gr. | DS

2023 Season Highs

Kills	1 (9/8 vs. Western Illinois)
Attempts	1 (Three Times)
Hitting %	1.000 [1-0-1] (9/8 vs. WIU)
Blocks	n/a
Digs	6 (Three Times)
Aces	1 (Twice)
Assists	2 (9/8 vs. Western Illinois)

Career Highs

Kills	2 (10/18/22 vs. IUPUI)
Attempts	5 (3/22/21 at PFW)
Hitting %	1.000 [1-0-1] (Three Times)
Blocks	same
Digs	17 (3/8/21 at NKU)
Aces	3 (10/18/19 vs. IUPUI)
Assists	12 (2/9/21 vs. GB)

ACTIVE CAREER LEADERS

Matches Played

Ari Miller	123
Mati Jakscht	88
Kaley Blake	84

Consecutive Matches Played

Madi Malone	82
Three Players Tied	48
<i>(Blake, Johnson, Schmitz)</i>	

Sets Played

Ari Miller	454
Madi Malone	303
Kaley Blake	299

Kills

Ari Miller	1,432
Madi Malone	925
Natalie Schmitz	504

Double-Figure Kills

Ari Miller	85
Madi Malone	55
Natalie Schmitz	27

Digs

Sarah Schrader	856
Madi Malone	775
Kaley Blake	590

Double-Figure Digs

Sarah Schrader	43
Madi Malone	41
Kaley Blake	20

Total Blocks

Ari Miller	413
Bri Guerts	153
Czhen Beneby	131

Assists

Kaley Blake	1,528
Josie Johnson	928
Sarah Schrader	140

Double-Doubles

Madi Malone	30
Kaley Blake	21
Josie Johnson	6

Service Aces

Sarah Schrader	68
Ari Miller	54
Kaley Blake	54
Madi Malone	44



MILWAUKEE MATCH-BY-MATCH



2023-24 Milwaukee Women's Volleyball Team Match-by-Match All games

Date	Opponent	SP	Attack				Set			Serve				Recept			Blocking					POINTS	SCORE	
			K	E	TA	PCT	A	TA	PCT	SA	SE	TA	PCT	RE	TA	PCT	DIG	BS	BA	BE	TOTAL			BHE
08/25/2023	at Western Mich.	4	37	21	125	.128	35	119	.294	2	12	73	.836	7	86	.919	43	7	12	0	13.0	3	52.0	1-3
08/26/2023	vs UNI	3	29	13	101	.158	26	94	.277	4	8	67	.881	5	65	.923	33	4	10	2	9.0	0	42.0	0-3
08/26/2023	vs Villanova	5	65	20	155	.290	60	148	.405	6	5	111	.955	8	92	.913	61	1	10	2	6.0	3	77.0	2-3
09/01/2023	vs California Baptist	4	45	29	158	.101	44	166	.265	2	4	80	.950	4	91	.956	64	4	12	1	10.0	4	57.0	1-3
09/01/2023	vs Montana St.	4	62	18	140	.314	60	144	.417	1	3	97	.969	13	81	.840	69	1	20	0	11.0	0	74.0	3-1
09/02/2023	at St. Thomas (MN)	3	49	13	112	.321	45	113	.398	1	6	74	.919	1	46	.978	58	1	16	2	9.0	1	59.0	3-0
09/04/2023	Northwestern	4	52	21	137	.226	47	136	.346	5	3	88	.966	8	87	.908	50	3	10	5	8.0	0	65.0	3-1
09/08/2023	vs Idaho	3	45	6	85	.459	38	79	.481	3	3	74	.959	6	43	.860	38	3	10	2	8.0	0	56.0	3-0
09/08/2023	vs Western Ill.	5	71	23	193	.249	66	194	.340	5	5	111	.955	6	94	.936	93	2	18	4	11.0	0	87.0	3-2
09/09/2023	at SIUE	4	50	16	138	.246	48	139	.345	5	6	86	.930	6	84	.929	58	0	10	0	5.0	1	60.0	1-3
09/12/2023	DePaul	3	45	17	117	.239	44	113	.389	5	2	73	.973	2	57	.965	44	4	12	2	10.0	1	60.0	3-0
09/14/2023	Marquette	4	48	16	137	.234	45	145	.310	5	7	75	.907	8	89	.910	62	0	8	2	4.0	1	57.0	1-3
09/15/2023	Air Force	5	69	25	181	.243	65	187	.348	9	12	106	.887	3	93	.968	81	3	8	1	7.0	0	85.0	3-2
09/19/2023	at Chicago St.	5	46	20	136	.191	41	134	.306	8	11	96	.885	10	92	.891	42	2	24	4	14.0	1	68.0	3-2
09/22/2023	IUPUI	3	30	12	76	.237	26	67	.388	5	2	73	.973	5	39	.872	34	2	24	0	14.0	0	49.0	3-0
09/23/2023	Purdue Fort Wayne	3	47	8	99	.394	42	97	.433	8	7	73	.904	2	46	.957	53	0	14	0	7.0	1	62.0	3-0
09/29/2023	at Robert Morris	4	54	19	134	.261	51	131	.389	5	5	99	.949	5	65	.923	74	2	24	4	14.0	0	73.0	3-1
09/30/2023	at Youngstown St.	4	56	23	132	.250	53	126	.421	9	2	95	.979	4	75	.947	50	2	10	2	7.0	1	72.0	3-1
10/03/2023	Green Bay	4	51	25	140	.186	48	146	.329	7	6	78	.923	8	92	.913	55	0	16	3	8.0	4	66.0	1-3
10/06/2023	Northern Ky.	4	57	20	156	.237	53	159	.333	8	10	98	.898	6	82	.927	78	2	18	2	11.0	0	76.0	3-1
10/07/2023	Wright St.	4	54	13	151	.272	52	153	.340	6	7	89	.921	6	80	.925	71	1	20	1	11.0	2	71.0	3-1
Totals		82	1062	378	2803	.244	989	2790	.354	109	126	1816	.931	123	1579	.922	1211	44	306	39	197.0	23	1368.0	
Opponents		82	1026	479	2921	.187	971	2925	.332	123	133	1712	.922	109	1690	.936	1191	19	289	26	163.5	13	1312.5	

Team Averages

Sets Played	Kills per set	Assists per set	Service aces per set	Digs per set	Blocks per set	Points per set	Ball handling error per set	Reception errors per set
82	12.95	12.06	1.33	14.77	2.40	16.68	0.28	1.50



OPPONENT MATCH-BY-MATCH



2023-24 Milwaukee Women's Volleyball Opponents Match-by-Match All games

Date	Opponent	SP	Attack				Set			Serve				Recept			Blocking				BHE	POINTS	SCORE	
			K	E	TA	PCT	A	TA	PCT	SA	SE	TA	PCT	RE	TA	PCT	DIG	BS	BA	BE				TOTAL
08/25/2023	at Western Mich.	4	53	24	129	.225	50	125	.400	7	9	95	.905	2	61	.967	60	2	8	1	6.0	0	66.0	1-3
08/26/2023	vsUNI	3	49	21	111	.252	47	108	.435	5	8	73	.890	4	59	.932	51	0	14	0	7.0	1	61.0	0-3
08/26/2023	vsVillanova	5	70	22	165	.291	67	163	.411	8	14	106	.868	6	106	.943	59	1	16	1	9.0	1	87.0	2-3
09/01/2023	vsCalifornia Baptist	4	56	22	148	.230	55	154	.357	4	6	97	.938	2	76	.974	69	2	18	1	11.0	2	71.0	1-3
09/01/2023	vsMontana St.	4	52	27	158	.158	47	164	.287	13	7	88	.920	1	94	.989	55	1	14	2	8.0	0	73.0	3-1
09/02/2023	at St. Thomas (MN)	3	29	19	123	.081	29	130	.223	1	6	52	.885	1	68	.985	47	0	12	0	6.0	0	36.0	3-0
09/04/2023	Northwestern	4	56	24	143	.224	52	137	.380	8	7	94	.926	5	85	.941	51	1	23	1	12.5	0	76.5	3-1
09/08/2023	vsIdaho	3	26	21	89	.056	24	95	.253	6	1	44	.977	3	71	.958	30	0	4	3	2.0	0	34.0	3-0
09/08/2023	vsWestern Ill.	5	61	24	191	.194	56	191	.293	6	5	99	.949	5	106	.953	83	0	12	4	6.0	0	73.0	3-2
09/09/2023	at SIUE	4	60	22	150	.253	56	149	.376	6	6	90	.933	5	80	.938	65	1	18	0	10.0	1	76.0	1-3
09/12/2023	DePaul	3	34	19	104	.144	32	113	.283	2	2	59	.966	5	71	.930	48	1	14	2	8.0	2	44.0	3-0
09/14/2023	Marquette	4	56	19	147	.252	55	143	.385	8	2	91	.978	5	68	.926	67	1	12	0	7.0	0	71.0	1-3
09/15/2023	Air Force	5	61	19	170	.247	60	175	.343	3	9	102	.912	9	94	.904	77	2	18	2	11.0	0	75.0	3-2
09/19/2023	at Chicago St.	5	61	30	144	.215	59	140	.421	10	12	104	.885	8	85	.906	57	2	14	1	9.0	1	80.0	3-2
09/22/2023	IUPUI	3	27	29	100	-.020	25	98	.255	5	9	48	.813	5	71	.930	29	0	10	0	5.0	1	37.0	3-0
09/23/2023	Purdue Fort Wayne	3	28	17	106	.104	25	108	.231	2	2	48	.958	8	66	.879	41	0	8	2	4.0	0	34.0	3-0
09/29/2023	at Robert Morris	4	42	30	157	.076	38	154	.247	5	8	73	.890	5	94	.947	56	0	16	2	8.0	1	55.0	3-1
09/30/2023	at Youngstown St.	4	52	23	136	.213	49	130	.377	4	8	83	.904	9	93	.903	45	0	16	2	8.0	0	64.0	3-1
10/03/2023	Green Bay	4	51	16	129	.271	48	123	.390	8	3	95	.968	7	72	.903	57	3	12	1	9.0	0	68.0	1-3
10/06/2023	Northern Ky.	4	47	26	160	.131	45	170	.265	6	4	86	.953	8	88	.909	72	0	24	1	12.0	3	65.0	3-1
10/07/2023	Wright St.	4	55	25	161	.186	52	155	.335	6	5	85	.941	6	82	.927	72	2	6	0	5.0	0	66.0	3-1
Opponent totals		82	1026	479	2921	.187	971	2925	.332	123	133	1712	.922	109	1690	.936	1191	19	289	26	163.5	13	1312.5	
Milwaukee totals		82	1062	378	2803	.244	989	2790	.354	109	126	1816	.931	123	1579	.922	1211	44	306	39	197.0	23	1368.0	

Team Averages

Sets Played	Kills per set	Assists per set	Service aces per set	Digs per set	Blocks per set	Points per set	Ball handling error per set	Reception errors per set
82	12.51	11.84	1.50	14.52	1.99	16.01	0.16	1.33